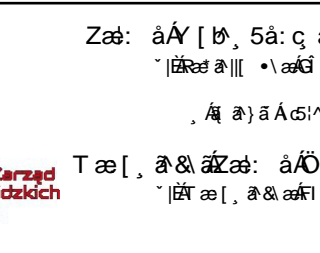
[illegible]

PROJEKT ÖSÖ

€GT ZÖY BEJDEFJR

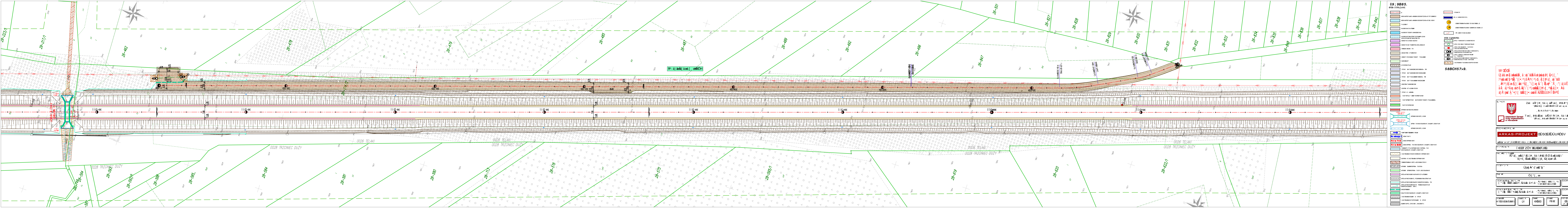
$$U = \frac{1}{2} \sum_{i=1}^n \left( \frac{1}{\lambda_i} \right)^2$$

---

•: Á à â ã: ã • \ ã • Á ^ (&#97) [ &#97  
Y C8' B0(FI B0

Umsatz K  
ÜY





N ထိုဝါ  
 [ & ခု ] အိမ်ထဲ, & : ဆွဲ & အိမ်ထဲဆွဲ  
 ဆွဲဆွဲ ပါ [ ] [ : ^ ] အိမ် ( ^ ) ငွေ, အိမ်  
 အိမ် ] အိမ် [ : ဆွဲ : အိမ်, [ ] ဆွဲ & : ဆွဲ  
 အိမ် : အိမ် အိမ် အိမ် [ ^ ] အိမ်  
 [ အိမ် အိမ် [ ^ ] အိမ် ] : အိမ် အိမ်

• q i K

 Mazowiecki Zarząd Dróg Wojewódzkich w Warszawie

Zas: áÁ [ ʲ, 5á: q  
[ ʲ á á ʲ ] ʲ á á  
, á á á á á  
T á [ , á á á á : á á  
[ ʲ á á ] , á á á á

$\{ \cdot \Delta \Delta \Delta \} \{ \cdot \Delta \Delta \Delta \}$

09-a-1-a-[A 000000] (A) : c) 000000 JDA HGA i A

$$\frac{1}{\sqrt{\pi}} \int_{-\infty}^{\infty} f(x) e^{-x^2} dx = \frac{1}{\sqrt{\pi}} \int_{-\infty}^{\infty} f(x) e^{-x^2} dx$$

S[•5, Á&āŮ[ \ [ ŷ5, ÁŮ[

U|a9 A c æ b

---

uk

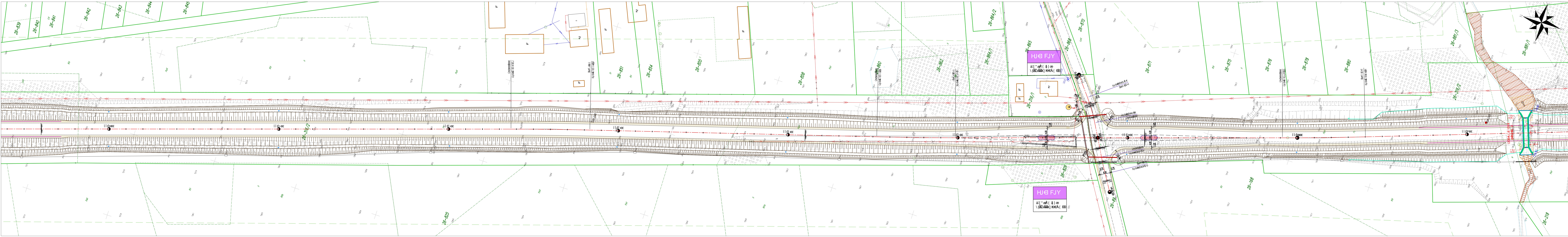
Öllur =

\*!A EOE\aaã: A àã:ã •\ã • A) ^&#91 Y O# 80#F)

\*|Á ĖŠĤ•cāē Áàā: ā•\ā . Á ^8299|  
Y OF BEU|

Uzunluk (m)	Yükseklik (m)	Yüzey Alanı (m <sup>2</sup> )	...
10	5	50	...



[illegible][illegible]

Zæ:    ǎÁ [ ʔ, 5â: q  
        ˈ|ǎæ ʔ|| •\ ǎá  
          , Á ʔ} ǎÁ

T æ [ , ʔ & ʔ æ : a /  
[ ʔ æ [ , ʔ & ʔ æ :

\_\_\_\_\_

---

**OBJEKT** **GEISST**

**THE** **WORLD**

ĐÁP: c) Học hỏi để đã hã i A

**TE FÖR EN BEHOVET**

— ZOO JEJEU

【\* 33】 [ 10 53: \ 304! 4

5,  $\tilde{A} \tilde{\sigma} \tilde{\sigma} \tilde{a} \tilde{E} \tilde{U} [ \setminus [ \tilde{y} \tilde{5}, \tilde{A} \tilde{U} [$

---

Ú|æ) Á^ ċ æ& ð ^

---

---

Öl [ \* [ , æ

$$A \wedge_{\text{Gödel}} B \equiv (A \rightarrow B) \rightarrow B$$

Uaā: a • \ a Y 08' 00(FI-

$$A \wedge B \Rightarrow A \vee B$$

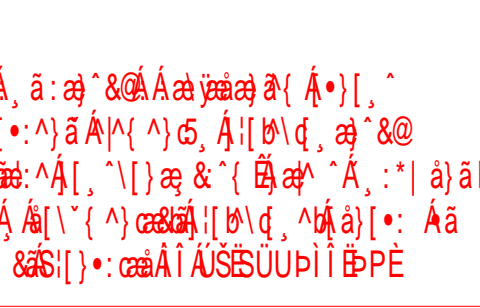
aa: a • \ a Y OF BEGJ

50 K. Omerik

UY	€-€€€
----	-------

--	--	--





**Figure 6**

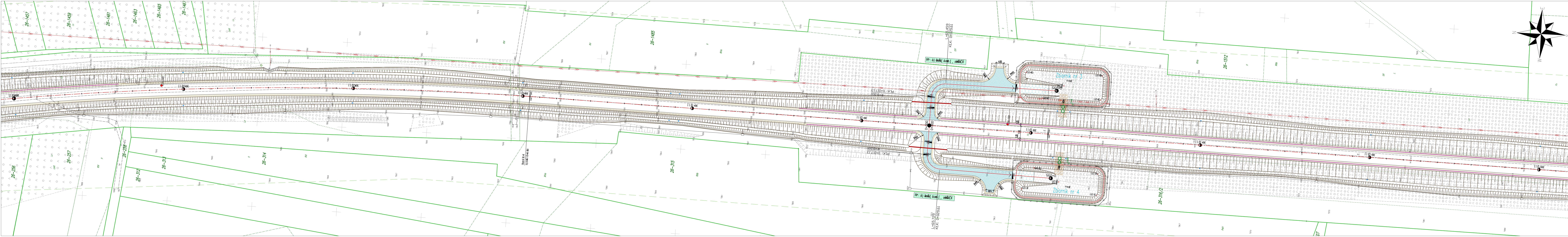
Ullrich Á. & Møller Á.

K  $\frac{A}{\sqrt{S}} \left( \frac{S}{A} \right)^{\frac{1}{n-1}}$

Y OF BOWLING GREEN

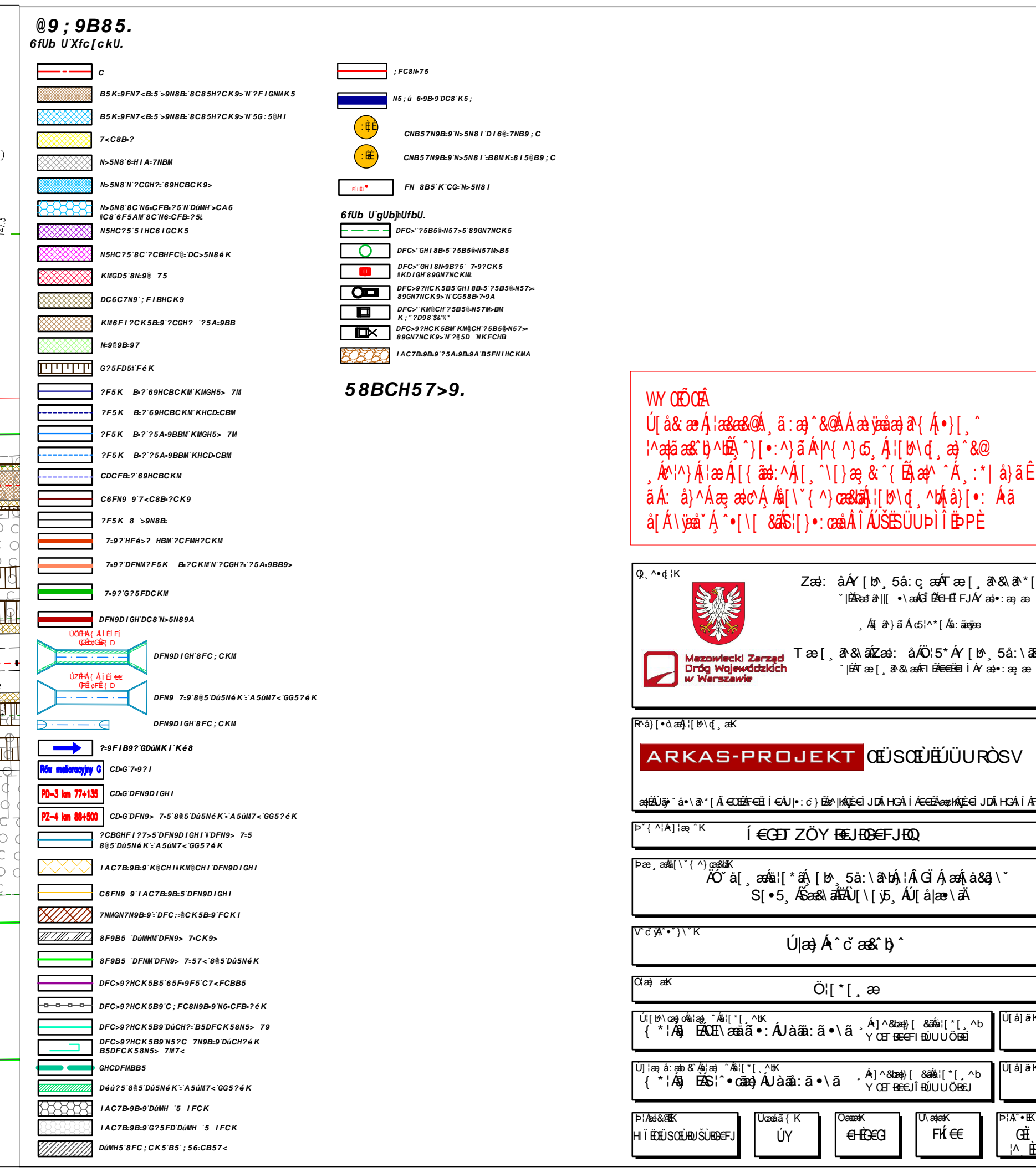
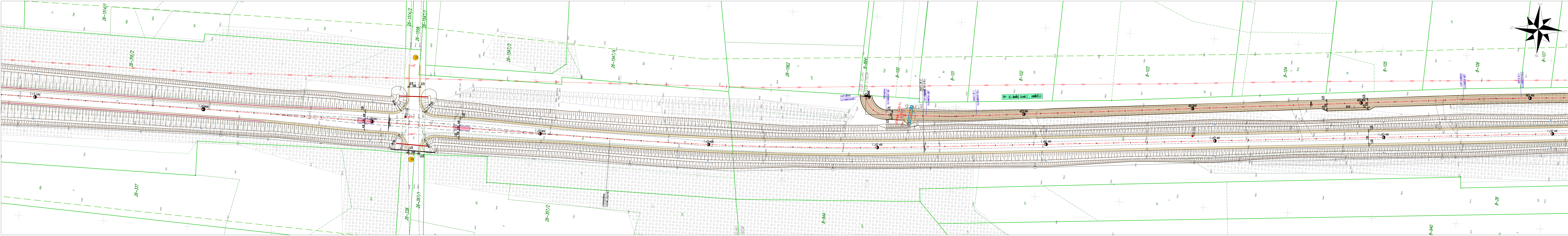
UY	GE	FK	GE
----	----	----	----



[illegible][illegible]

Q. 2. 4. 1. 2. 3. 4. 5. 6. 7. 8. 9. 10. 11. 12. 13. 14. 15. 16. 17. 18. 19. 20. 21. 22. 23. 24. 25. 26. 27. 28. 29. 30. 31. 32. 33. 34. 35. 36. 37. 38. 39. 40. 41. 42. 43. 44. 45. 46. 47. 48. 49. 50. 51. 52. 53. 54. 55. 56. 57. 58. 59. 60. 61. 62. 63. 64. 65. 66. 67. 68. 69. 70. 71. 72. 73. 74. 75. 76. 77. 78. 79. 80. 81. 82. 83. 84. 85. 86. 87. 88. 89. 90. 91. 92. 93. 94. 95. 96. 97. 98. 99. 100. 101. 102. 103. 104. 105. 106. 107. 108. 109. 110. 111. 112. 113. 114. 115. 116. 117. 118. 119. 120. 121. 122. 123. 124. 125. 126. 127. 128. 129. 130. 131. 132. 133. 134. 135. 136. 137. 138. 139. 140. 141. 142. 143. 144. 145. 146. 147. 148. 149. 150. 151. 152. 153. 154. 155. 156. 157. 158. 159. 160. 161. 162. 163. 164. 165. 166. 167. 168. 169. 170. 171. 172. 173. 174. 175. 176. 177. 178. 179. 180. 181. 182. 183. 184. 185. 186. 187. 188. 189. 190. 191. 192. 193. 194. 195. 196. 197. 198. 199. 200. 201. 202. 203. 204. 205. 206. 207. 208. 209. 210. 211. 212. 213. 214. 215. 216. 217. 218. 219. 220. 221. 222. 223. 224. 225. 226. 227. 228. 229. 230. 231. 232. 233. 234. 235. 236. 237. 238. 239. 240. 241. 242. 243. 244. 245. 246. 247. 248. 249. 250. 251. 252. 253. 254. 255. 256. 257. 258. 259. 260. 261. 262. 263. 264. 265. 266. 267. 268. 269. 270. 271. 272. 273. 274. 275. 276. 277. 278. 279. 280. 281. 282. 283. 284. 285. 286. 287. 288. 289. 290. 291. 292. 293. 294. 295. 296. 297. 298. 299. 300. 301. 302. 303. 304. 305. 306. 307. 308. 309. 310. 311. 312. 313. 314. 315. 316. 317. 318. 319. 320. 321. 322. 323. 324. 325. 326. 327. 328. 329. 330. 331. 332. 333. 334. 335. 336. 337. 338. 339. 340. 341. 342. 343. 344. 345. 346. 347. 348. 349. 350. 351. 352. 353. 354. 355. 356. 357. 358. 359. 360. 361. 362. 363. 364. 365. 366. 367. 368. 369. 370. 371. 372. 373. 374. 375. 376. 377. 378. 379. 380. 381. 382. 383. 384. 385. 386. 387. 388. 389. 390. 391. 392. 393. 394. 395. 396. 397. 398. 399. 400. 401. 402. 403. 404. 405. 406. 407. 408. 409. 410. 411. 412. 413. 414. 415. 416. 417. 418. 419. 420. 421. 422. 423. 424. 425. 426. 427. 428. 429. 430. 431. 432. 433. 434. 435. 436. 437. 438. 439. 440. 441. 442. 443. 444. 445. 446. 447. 448. 449. 450. 451. 452. 453. 454. 455. 456. 457. 458. 459. 460. 461. 462. 463. 464. 465. 466. 467. 468. 469. 470. 471. 472. 473. 474. 475. 476. 477. 478. 479. 480. 481. 482. 483. 484. 485. 486. 487. 488. 489. 490. 491. 492. 493. 494. 495. 496. 497. 498. 499. 500. 501. 502. 503. 504. 505. 506. 507. 508. 509. 510. 511. 512. 513. 514. 515. 516. 517. 518. 519. 520. 521. 522. 523. 524. 525. 526. 527. 528. 529. 530. 531. 532. 533. 534. 535. 536. 537. 538. 539. 540. 541. 542. 543. 544. 545. 546. 547. 548. 549. 550. 551. 552. 553. 554. 555. 556. 557. 558. 559. 560. 561. 562. 563. 564. 565. 566. 567. 568. 569. 570. 571. 572. 573. 574. 575. 576. 577. 578. 579. 580. 581. 582. 583. 584. 585. 586. 587. 588. 589. 590. 591. 592. 593. 594. 595. 596. 597. 598. 599. 600. 601. 602. 603. 604. 605. 606. 607. 608. 609. 610. 611. 612. 613. 614. 615. 616. 617. 618. 619. 620. 621. 622. 623. 624. 625. 626. 627. 628. 629. 630. 631. 632. 633. 634. 635. 636. 637. 638. 639. 640. 641. 642. 643. 644. 645. 646. 647. 648. 649. 650. 651. 652. 653. 654. 655. 656. 657. 658. 659. 660. 661. 662. 663. 664. 665. 666. 667. 668. 669. 670. 671. 672. 673. 674. 675. 676. 677. 678. 679. 680. 681. 682. 683. 684. 685. 686. 687. 688. 689. 690. 691. 692. 693. 694. 695. 696. 697. 698. 699. 700. 701. 702. 703. 704. 705. 706. 707. 708. 709. 710. 711. 712. 713. 714. 715. 716. 717. 718. 719. 720. 721. 722. 723. 724. 725. 726. 727. 728. 729. 730. 731. 732. 733. 734. 735. 736. 737. 738. 739. 740. 741. 742. 743. 744. 745. 746. 747. 748. 749. 750. 751. 752. 753. 754. 755. 756. 757. 758. 759. 760. 761. 762. 763. 764. 765. 766. 767. 768. 769. 770. 771. 772. 773. 774. 775. 776. 777. 778. 779. 780. 781. 782. 783. 784. 785. 786. 787. 788. 789. 790. 791. 792. 793. 794. 795. 796. 797. 798. 799. 800. 801. 802. 803. 804. 805. 806. 807. 808. 809. 810. 811. 812. 813. 814. 815. 816. 817. 818. 819. 820. 821. 822. 823. 824. 825. 826. 827. 828. 829. 830. 831. 832. 833. 834. 835. 836. 837. 838. 839



[illegible]

	<p>Zas: áÁ [y̯, Sá: ç æt̪ æ], [ɕit̪ æ]    • t̪æç ðæt̪ FJÁ: [æ æ] s Á d̪æ^ [æ: æm̪]</p> <p>T æ [ , æ &amp; æzæs: áÁ / 5^ Á y̯ [ɕt̪ æ] [ , æ &amp; æm̪ t̪æçt̪ ] Á</p>
---	---

## ARKAS-PROJEKT

[illegible]

പര. അതിൽ ' ' ^) ഉൾക്ക

V'dW's) K

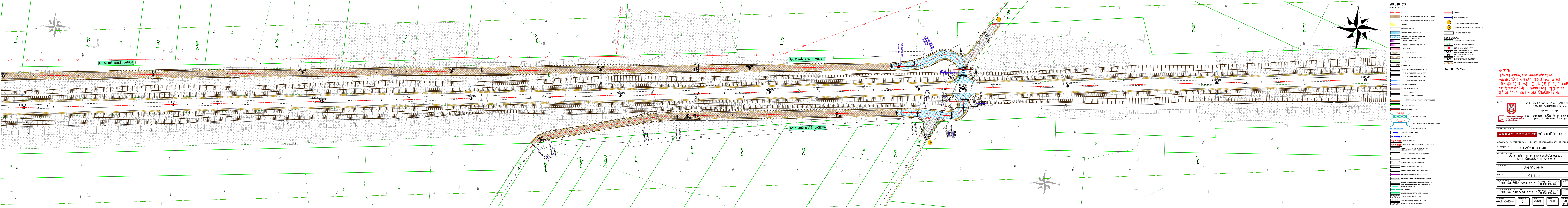
(X) nk	Öl * [æ]
--------	----------

{ \*|/ā BŲ\aaā • Āāā: ā • ā } Y CŲ BŲFI BŲUŲŲŲ

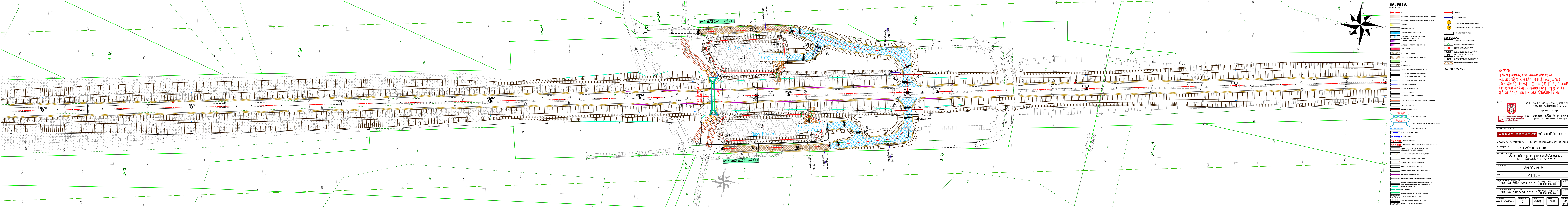
Y OF BEIJING UNIVERSITY

11	01	0000	Three
----	----	------	-------









සිසිඳු, ā: සු & ඳු ආසු  
 ඳු \* (• ^) ā Á ( ^) ඳු  
 e Á ( ( සු: ^ Á (, ^ \) සු &  
 සු සු ඳු ඳු Á ( \ ( ^) සිසිඳු  
 \* (• \ ( & Á (•): සු ඳු ඳු

Zas: áÁ [ ʰ, 5á: ç ʰʰ ʰʰ ], ʰʰ ʰʰ [ ʰʰ ʰʰ ʰʰ ʰʰ ]  
 , ʰʰ ʰʰ á á ʰʰ [ ʰʰ ʰʰ ʰʰ ]  
 T ʰʰ [ ʰʰ ʰʰ ʰʰ : á Á ʰʰ [ ʰʰ, 5á: ʰʰ  
 [ ʰʰ ʰʰ ], ʰʰ ʰʰ ʰʰ ʰʰ ʰʰ ʰʰ ʰʰ ʰʰ ʰʰ ʰʰ

6. 000 LEKT

$$A \otimes_{\mathbb{R}} \mathbb{C} \cong \begin{pmatrix} A & 0 \\ 0 & A \end{pmatrix} \quad \text{as } \mathbb{C}\text{-algebras}$$
[illegible]

31 75, 100, 125, 150, 175, 200, 225, 250, 275, 300, 325, 350, 375, 400, 425, 450, 475, 500, 525, 550, 575, 600, 625, 650, 675, 700, 725, 750, 775, 800, 825, 850, 875, 900, 925, 950, 975, 1000, 1025, 1050, 1075, 1100, 1125, 1150, 1175, 1200, 1225, 1250, 1275, 1300, 1325, 1350, 1375, 1400, 1425, 1450, 1475, 1500, 1525, 1550, 1575, 1600, 1625, 1650, 1675, 1700, 1725, 1750, 1775, 1800, 1825, 1850, 1875, 1900, 1925, 1950, 1975, 2000, 2025, 2050, 2075, 2100, 2125, 2150, 2175, 2200, 2225, 2250, 2275, 2300, 2325, 2350, 2375, 2400, 2425, 2450, 2475, 2500, 2525, 2550, 2575, 2600, 2625, 2650, 2675, 2700, 2725, 2750, 2775, 2800, 2825, 2850, 2875, 2900, 2925, 2950, 2975, 3000, 3025, 3050, 3075, 3100, 3125, 3150, 3175, 3200, 3225, 3250, 3275, 3300, 3325, 3350, 3375, 3400, 3425, 3450, 3475, 3500, 3525, 3550, 3575, 3600, 3625, 3650, 3675, 3700, 3725, 3750, 3775, 3800, 3825, 3850, 3875, 3900, 3925, 3950, 3975, 4000, 4025, 4050, 4075, 4100, 4125, 4150, 4175, 4200, 4225, 4250, 4275, 4300, 4325, 4350, 4375, 4400, 4425, 4450, 4475, 4500, 4525, 4550, 4575, 4600, 4625, 4650, 4675, 4700, 4725, 4750, 4775, 4800, 4825, 4850, 4875, 4900, 4925, 4950, 4975, 5000, 5025, 5050, 5075, 5100, 5125, 5150, 5175, 5200, 5225, 5250, 5275, 5300, 5325, 5350, 5375, 5400, 5425, 5450, 5475, 5500, 5525, 5550, 5575, 5600, 5625, 5650, 5675, 5700, 5725, 5750, 5775, 5800, 5825, 5850, 5875, 5900, 5925, 5950, 5975, 6000, 6025, 6050, 6075, 6100, 6125, 6150, 6175, 6200, 6225, 6250, 6275, 6300, 6325, 6350, 6375, 6400, 6425, 6450, 6475, 6500, 6525, 6550, 6575, 6600, 6625, 6650, 6675, 6700, 6725, 6750, 6775, 6800, 6825, 6850, 6875, 6900, 6925, 6950, 6975, 7000, 7025, 7050, 7075, 7100, 7125, 7150, 7175, 7200, 7225, 7250, 7275, 7300, 7325, 7350, 7375, 7400, 7425, 7450, 7475, 7500, 7525, 7550, 7575, 7600, 7625, 7650, 7675, 7700, 7725, 7750, 7775, 7800, 7825, 7850, 7875, 7900, 7925, 7950, 7975, 8000, 8025, 8050, 8075, 8100, 8125, 8150, 8175, 8200, 8225, 8250, 8275, 8300, 8325, 8350, 8375, 8400, 8425, 8450, 8475, 8500, 8525, 8550, 8575, 8600, 8625, 8650, 8675, 8700, 8725, 8750, 8775, 8800, 8825, 8850, 8875, 8900, 8925, 8950, 8975, 9000, 9025, 9050, 9075, 9100, 9125, 9150, 9175, 9200, 9225, 9250, 9275, 9300, 9325, 9350, 9375, 9400, 9425, 9450, 9475, 9500, 9525, 9550, 9575, 9600, 9625, 9650, 9675, 9700, 9725, 9750, 9775, 9800, 9825, 9850, 9875, 9900, 9925, 9950, 9975, 10000, 10025, 10050, 10075, 10100, 10125, 10150, 10175, 10200, 10225, 10250, 10275, 10300, 10325, 10350, 10375, 10400, 10425, 10450, 10475, 10500, 10525, 10550, 10575, 10600, 10625, 10650, 10675, 10700, 10725, 10750, 10775, 10800, 10825, 10850, 10875, 10900, 10925, 10950, 10975, 11000, 11025, 11050, 11075, 11100, 11125, 11150, 11175, 11200, 11225, 11250, 11275, 11300, 11325, 11350, 11375, 11400, 11425, 11450, 11475, 11500, 11525, 11550, 11575, 11600, 11625, 11650, 11675, 11700, 11725, 11750, 11775, 11800, 11825, 11850, 11875, 11900, 11925, 11950, 11975, 12000, 12025, 12050, 12075, 12100, 12125, 12150, 12175, 12200, 12225, 12250, 12275, 12300, 12325, 12350, 12375, 12400, 12425, 12450, 12475, 12500, 12525, 12550, 12575, 12600, 12625, 12650, 12675, 12700, 12725, 12750, 12775, 12800, 12825, 12850, 12875, 12900, 12925, 12950, 12975, 13000, 13025, 13050, 13075, 13100, 13125, 13150, 13175, 13200, 13225, 13250, 13275, 13300, 13325, 13350, 13375, 13400, 13425, 13450, 13475, 13500, 13525, 13550, 13575, 13600, 13625, 13650, 13675, 13700, 13725, 13750, 13775, 13800, 13825, 13850, 13875, 13900, 13925, 13950, 13975, 14000, 14025, 14050, 14075, 14100, 14125, 14150, 14175, 14200, 14225, 14250, 14275, 14300, 14325, 14350, 14375, 14400, 14425, 14450, 14475, 14500, 14525, 14550, 14575, 14600, 14625, 14650, 14675, 14700, 14725, 14750, 14775, 14800, 14825, 14850, 14875, 14900, 14925, 14950, 14975, 15000, 15025, 15050, 15075, 15100, 15125, 15150, 15175, 15200, 15225, 15250, 15275, 15300, 15325, 15350, 15375, 15400, 15425, 15450, 15475, 15500, 15525, 15550, 15575, 15600, 15625, 15650, 15675, 15700, 15725, 15750, 15775, 15800, 15825, 15850, 15875, 15900, 15925, 15950, 15975, 16000, 16025, 16050, 16075, 16100, 16125, 16150, 16175, 16200, 1622

---



---

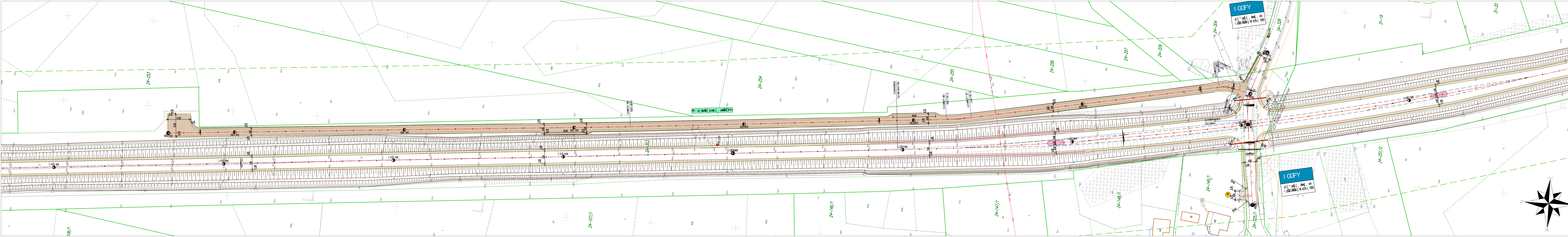
Q11\*1-3

À à ã • Á à ã: ã • \ ã • Á ^ Á [ ã: [ • [ ^ b  
Y CF BF FI BU U C G

\* 000 Ajaã: ã · \ ã

9FJ	UY	EHG	FR €	GE 1^ E
-----	----	-----	------	------------



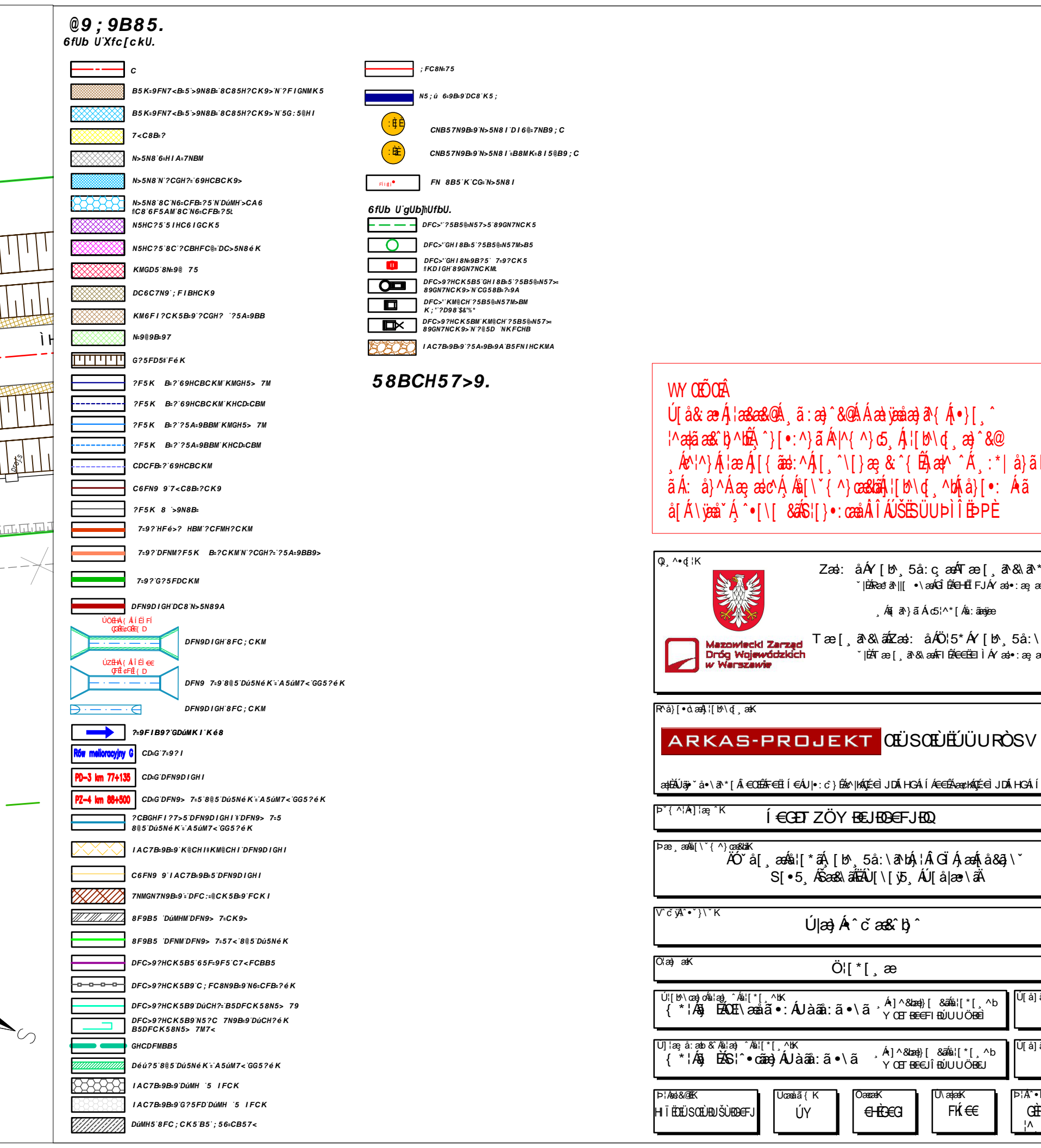


09 : 9B85.

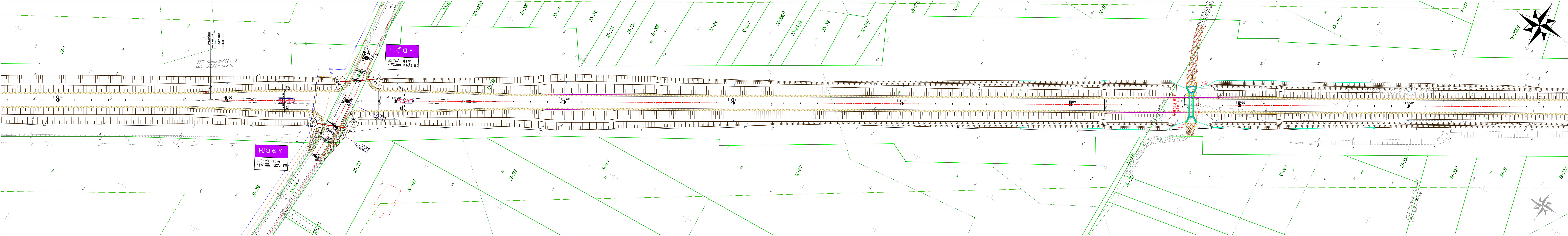
09B U xfcvku.

	C
	BSK9F87-0S5-988B-EC8SH7CK9-N7F7GMMK5
	BSK9F87-0S5-988B-EC8SH7CK9-VG55-S8H1
	TC8B97
	N-588-6A1-7A88
	N-588-7C8H7-9H8CK89-N
	N-588-8C8H7C8F79-N88H7C8G-EC8F8A8C8H8C8F79S
	8H8C79-SH8C79G85
	8H8C79-8C79H8C79-DC8H89-K
	8H8C79-8H89-75
	DC8C789-7-F18HCK9
	8H8C79-8H89-7C8H7-75A-88B
	N-588-8H9
	GT8F8H7-F-K
	75F-K-7-68H8CK9-KH89-75
	75F-K-7-68H8CK9-KH8C8H9
	75F-K-7-75A-88B-KH89-75
	75F-K-7-75A-88B-KH8C8H9
	CC8F7-68H8CK9
	CE8F9-9-7-CK8H7CK9
	75F-K-8-988B
	7-97H8F-67-H8H7C8H7CK9
	7-97H8F7-F-K-7CK9H87C8H7-75A-88B9
	7-97H8F7CK9
	DF8H87G8C8H9-N-588A
	VO8A-A1H8C8H9-8H8C8H9
	DF8H87G8C8H9-C8H9
	VO8A-A1H8C8H9-8H8C8H9
	DF89-7-9-8H8C8H9-K8H87-8H8C8H9
	DF8H87G8C8H9-C8H9
	7-97H8F7-8H8C8H9-K8H87-8H8C8H9
	7-97H8F7-8H8C8H9-K8H87-8H8C8H9
	7-97H8F7-8H8C8H9-K8H87-8H8C8H9
	7-97H8F7-8H8C8H9-K8H87-8H8C8H9
	7-97H8F7-8H8C8H9-K8H87-8H8C8H9
	7-97H8F7-8H8C8H9-K8H87-8H8C8H9
	7-97H8F7-8H8C8H9-K8H87-8H8C8H9
	7-97H8F7-8H8C8H9-K8H87-8H8C8H9
	7-97H8F7-8H8C8H9-K8H87-8H8C8H9
	7-97H8F7-8H8C8H9-K8H87-8H8C8H9
	7-97H8F7-8H8C8H9-K8H87-8H8C8H9
	7-97H8F7-8H8C8H9-K8H87-8H8C8H9
	7-97H8F7-8H8C8H9-K8H87-8H8C8H9
	7-97H8F7-8H8C8H9-K8H87-8H8C8H9
	7-97H8F7-8H8C8H9-K8H87-8H8C8H9
	7-97H8F7-8H8C8H9-K8H87-8H8C8H9
	7-97H8F7-8H8C8H9-K8H87-8H8C8H9
	7-97H8F7-8H8C8H9-K8H87-8H8C8H9
	7-97H8F7-8H8C8H9-K8H87-8H8C8H9
	7-97H8F7-8H8C8H9-K8H87-8H8C8H9
	7-97H8F7-8H8C8H9-K8H87-8H8C8H9
	7-97H8F7-8H8C8H9-K8H87-8H8C8H9
	7-97H8F7-8H8C8H9-K8H87-8H8C8H9
	7-97H8F7-8H8C8H9-K8H87-8H8C8H9
	7-97H8F7-8H8C8H9-K8H87-8H8C8H9
	7-97H8F7-8H8C8H9-K8H87-8H8C8H9
	7-97H8F7-8H8C8H9-K8H87-8H8C8H9
	7-97H8F7-8H8C8H9-K8H87-8H8C8H9
	7-97H8F7-8H8C8H9-K8H87-8H8C8H9
	7-97H8F7-8H8C8H9-K8H87-8H8C8H9
	7-97H8F7-8H8C8H9-K8H87-8H8C8H9
	7-97H8F7-8H8C8H9-K8H87-8H8C8H9
	7-97H8F7-8H8C8H9-K8H87-8H8C8H9
	7-97H8F7-8H8C8H9-K8H87-8H8C8H9
	7-97H8F7-8H8C8H9-K8H87-8H8C8H9
	7-97H8F7-8H8C8H9-K8H87-8H8C8H9
	7-97H8F7-8H8C8H9-K8H87-8H8C8H9
	7-97H8F7-8H8C8H9-K8H87-8H8C8H9
	7-97H8F7-8H8C8H9-K8H87-8H8C8H9
	7-97H8F7-8H8C8H9-K8H87-8H8C8H9
	7-97H8F7-8H8C8H9-K8H87-8H8C8H9
	7-97H8F7-8H8C8H9-K8H87-8H8C8H9
	7-97H8F7-8H8C8H9-K8H87-8H8C8H9
	7-97H8F7-8H8C8H9-K8H87-8H8C8H9
	7-97H8F7-8H8C8H9-K8H87-8H8C8H9
	7-97H8F7-8H8C8H9-K8H87-8H8C8H9
	7-97H8F7-8H8C8H9-K8H87-8H8C8H9
	7-97H8F7-8H8C8H9-K8H87-8H8C8H9
	7-97H8F7-8H8C8H9-K8H87-8H8C8H9
	7-97H8F7-8H8C8H9-K8H87-8H8C8H9
	7-97H8F7-8H8C8H9-K8H87-8H8C8H9
	7-97H8F7-8H8C8H9-K8H87-8H8C8H9
	7-97H8F7-8H8C8H9-K8H87-8H8C8H9
	7-97H8F7-8H8C8H9-K8H87-8H8C8H9
	7-97H8F7-8H8C8H9-K8H87-8H8C

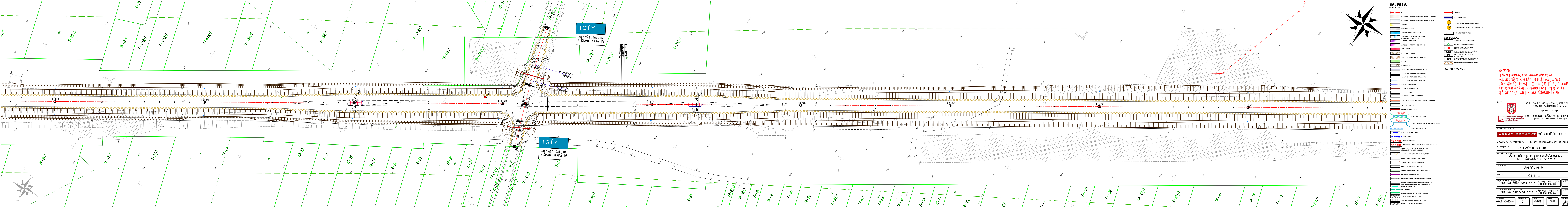




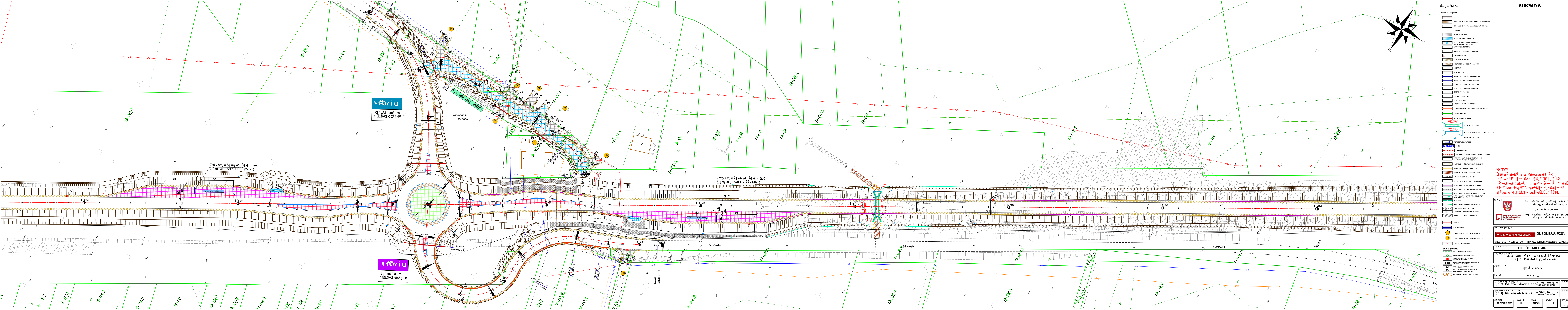


[illegible][illegible][illegible]

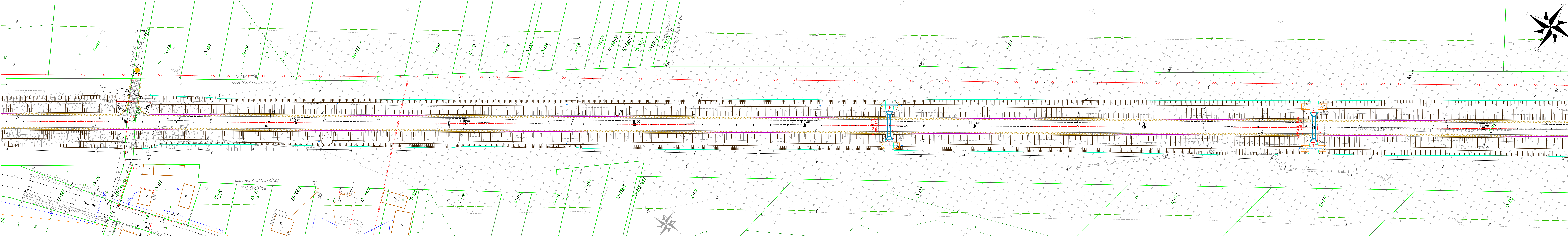




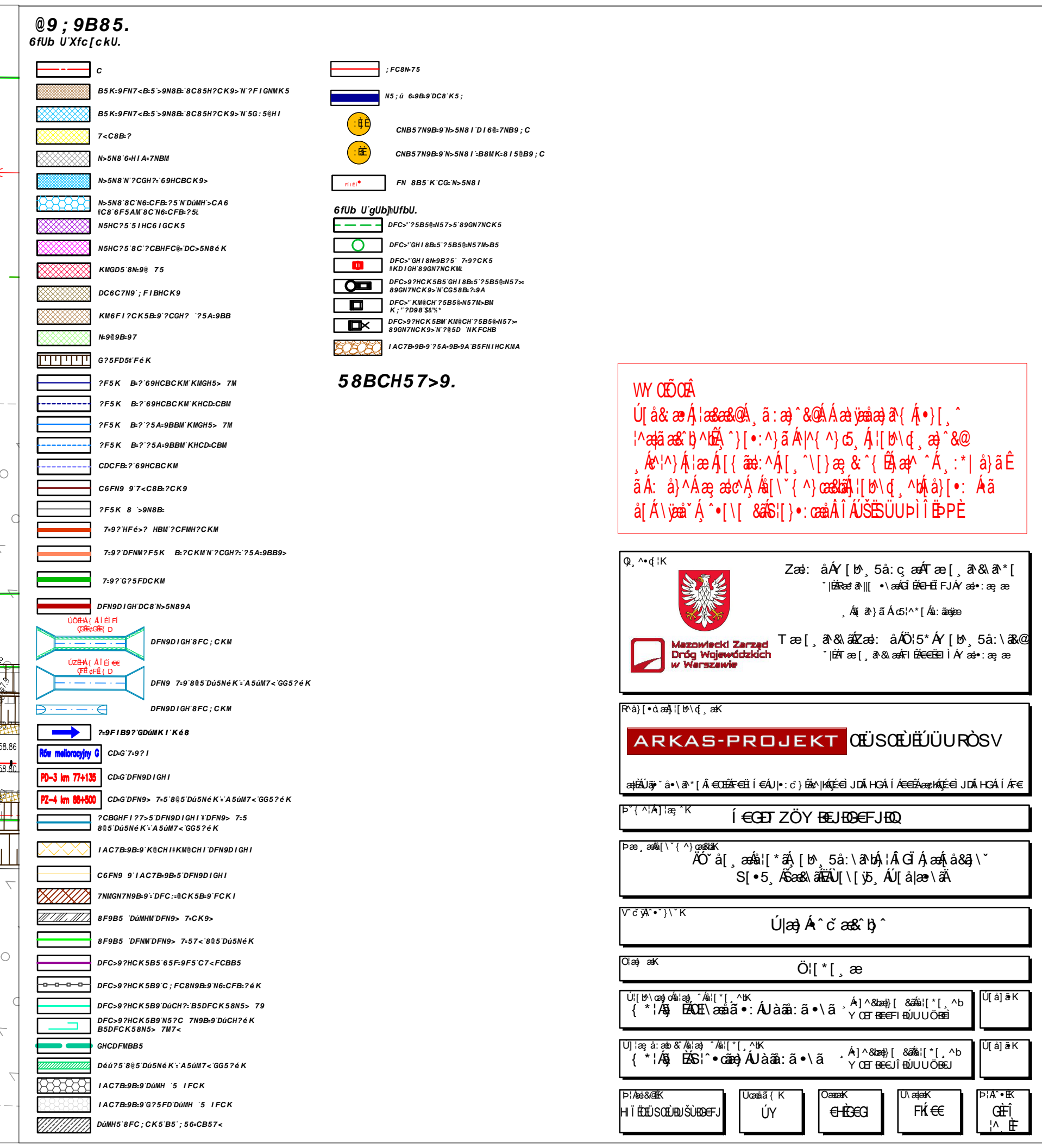
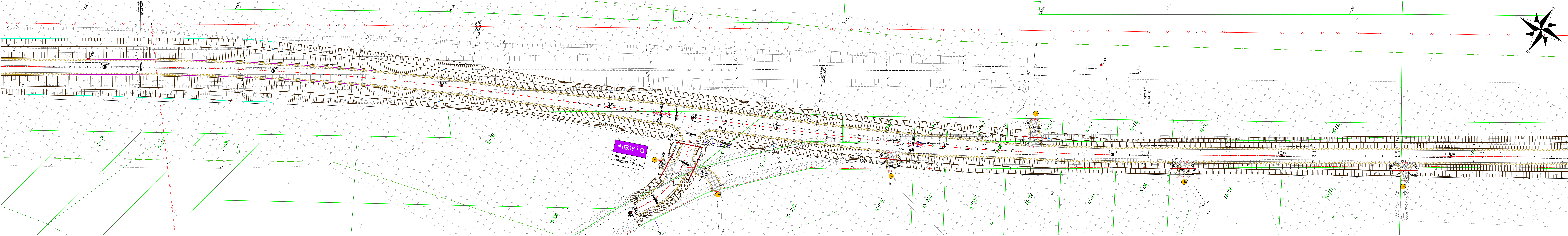




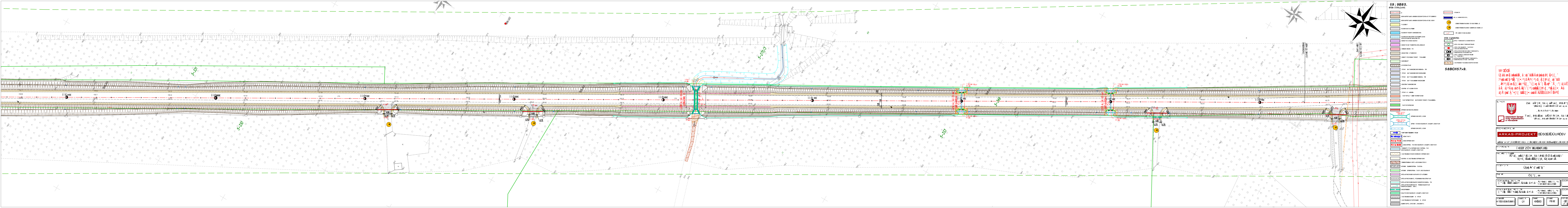


[illegible]

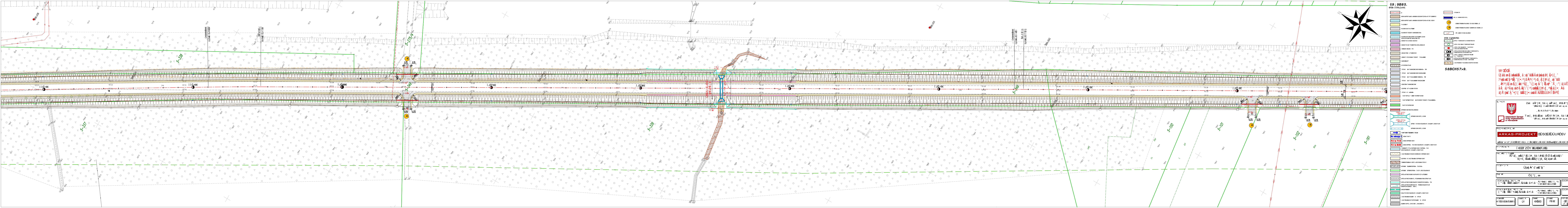












a: æ ^ & @ A A æ  
A) T Á M A )

$$\lambda \in \Lambda \mid \lambda \in \Lambda \mid \lambda \in \Lambda$$

$\{ \sqrt[n]{x} \mid n \in \mathbb{N}, n > 1 \}$

$\{S\} \cdot : \text{case } \hat{A} \hat{I}$

\_\_\_\_\_

Zæð: áÁ [

<sup>a</sup> ||  $\overline{\text{Br}}^{\text{Br}}$ 

1998, 1999, 2000, 2001, 2002, 2003, 2004, 2005, 2006, 2007, 2008, 2009, 2010, 2011, 2012, 2013, 2014, 2015, 2016, 2017, 2018, 2019, 2020, 2021, 2022, 2023, 2024, 2025, 2026, 2027, 2028, 2029, 2030, 2031, 2032, 2033, 2034, 2035, 2036, 2037, 2038, 2039, 2040, 2041, 2042, 2043, 2044, 2045, 2046, 2047, 2048, 2049, 2050, 2051, 2052, 2053, 2054, 2055, 2056, 2057, 2058, 2059, 2060, 2061, 2062, 2063, 2064, 2065, 2066, 2067, 2068, 2069, 2070, 2071, 2072, 2073, 2074, 2075, 2076, 2077, 2078, 2079, 2080, 2081, 2082, 2083, 2084, 2085, 2086, 2087, 2088, 2089, 2090, 2091, 2092, 2093, 2094, 2095, 2096, 2097, 2098, 2099, 2100, 2101, 2102, 2103, 2104, 2105, 2106, 2107, 2108, 2109, 2110, 2111, 2112, 2113, 2114, 2115, 2116, 2117, 2118, 2119, 2120, 2121, 2122, 2123, 2124, 2125, 2126, 2127, 2128, 2129, 2130, 2131, 2132, 2133, 2134, 2135, 2136, 2137, 2138, 2139, 2140, 2141, 2142, 2143, 2144, 2145, 2146, 2147, 2148, 2149, 2150, 2151, 2152, 2153, 2154, 2155, 2156, 2157, 2158, 2159, 2160, 2161, 2162, 2163, 2164, 2165, 2166, 2167, 2168, 2169, 2170, 2171, 2172, 2173, 2174, 2175, 2176, 2177, 2178, 2179, 2180, 2181, 2182, 2183, 2184, 2185, 2186, 2187, 2188, 2189, 2190, 2191, 2192, 2193, 2194, 2195, 2196, 2197, 2198, 2199, 2200, 2201, 2202, 2203, 2204, 2205, 2206, 2207, 2208, 2209, 2210, 2211, 2212, 2213, 2214, 2215, 2216, 2217, 2218, 2219, 2220, 2221, 2222, 2223, 2224, 2225, 2226, 2227, 2228, 2229, 2230, 2231, 2232, 2233, 2234, 2235, 2236, 2237, 2238, 2239, 2240, 2241, 2242, 2243, 2244, 2245, 2246, 2247, 2248, 2249, 2250, 2251, 2252, 2253, 2254, 2255, 2256, 2257, 2258, 2259, 2260, 2261, 2262, 2263, 2264, 2265, 2266, 2267, 2268, 2269, 2270, 2271, 2272, 2273, 2274, 2275, 2276, 2277, 2278, 2279, 2280, 2281, 2282, 2283, 2284, 2285, 2286, 2287, 2288, 2289, 2290, 2291, 2292, 2293, 2294, 2295, 2296, 2297, 2298, 2299, 2300, 2301, 2302, 2303, 2304, 2305, 2306, 2307, 2308, 2309, 2310, 2311, 2312, 2313, 2314, 2315, 2316, 2317, 2318, 2319, 2320, 2321, 2322, 2323, 2324, 2325, 2326, 2327, 2328, 2329, 2330, 2331, 2332, 2333, 2334, 2335, 2336, 2337, 2338, 2339, 2340, 2341, 2342, 2343, 2344, 2345, 2346, 2347, 2348, 2349, 2350, 2351, 2352, 2353, 2354, 2355, 2356, 2357, 2358, 2359, 2360, 2361, 2362, 2363, 2364, 2365, 2366, 2367, 2368, 2369, 2370, 2371, 2372, 2373, 2374, 2375, 2376, 2377, 2378, 2379, 2380, 2381, 2382, 2383, 2384, 2385, 2386, 2387, 2388, 2389, 2390, 2391, 2392, 2393, 2394, 2395, 2396, 2397, 2398, 2399, 2400, 2401, 2402, 2403, 2404, 2405, 2406, 2407, 2408, 2409, 2410, 2411, 2412, 2413, 2414, 2415, 2416, 2417, 2418, 2419, 2420, 2421, 2422, 2423, 2424, 2425, 2426, 2427, 2428, 2429, 2430, 2431, 2432, 2433, 2434, 2435, 2436, 2437, 2438, 2439, 2440, 2441, 2442, 2443, 2444, 2445, 2446, 2447, 2448, 2449, 2450, 2451, 2452, 2453, 2454, 2455, 2456, 2457, 2458, 2459, 2460, 2461, 2462, 2463, 2464, 2465, 2466, 2467, 2468, 2469, 2470, 2471, 2472, 2473, 2474, 2475, 2476, 2477, 2478, 2479, 2480, 2481, 2482, 2483, 2484, 2485, 2486, 2487, 2488, 2489, 2490, 2491, 2492, 2493, 2494, 2495, 2496, 2497, 2498, 2499, 2500, 2501, 2502, 2503, 2504, 2505, 2506, 2507, 2508, 2509, 2510, 2511, 2512, 2513, 2514, 2515, 2516, 2517, 2518, 2519, 2520, 2521, 2522, 2523, 2524, 2525, 2526, 2527, 2528, 2529, 2530, 2531, 2532, 2533, 2534, 2535, 2536, 2537, 2538, 2539, 2540, 2541, 2542, 2543, 2544, 2545, 2546, 2547, 2548, 2549, 2550, 2551, 2552, 2553, 2554, 2555, 2556, 2557, 2558, 2559, 2560, 2561, 2562, 2563, 2564, 2565, 2566, 2567, 2568, 2569, 2570, 2571, 2572, 2573, 2574, 2575, 2576, 2577, 2578, 2579, 2580, 2581, 2582, 2583, 2584, 2585, 2586, 2587, 2588, 2589, 2590, 2591, 2592, 2593, 2594, 2595, 2596, 2597, 2598, 2599, 2600, 2601, 2602, 2603, 2604, 2605, 2606, 2607, 2608, 2609, 2610, 2611, 2612, 2613, 2614, 2615, 2616, 2617, 2618, 2619, 2620, 2621, 2622, 2623, 2624, 2625, 2626, 2627, 2628, 2629, 2630, 2631, 2632, 2633, 2634, 2635, 2636, 2637, 2638, 2639, 2640, 2641, 2642, 2643, 2644, 2645, 2646, 2647, 2648, 2649, 2650, 2651, 2652, 2653, 2654, 2655, 2656, 2657, 2658, 2659, 2660, 2661, 2662, 2663, 2664, 2665, 2666, 2667, 2668, 2669, 2670, 2671, 2672, 2673, 2674, 2675, 2676, 2677, 2678, 2679, 26

h | æ |, æ & æ  
- | æ |

\_\_\_\_\_

---

**OBJEKT**

Age Group	Percentage of Respondents
18-29	~10%
30-49	~20%
50-69	~30%
70+	~40%

[illegible]

ET ZÖY DEJED

[ \* ǎ [ ǁ 5ǎ:

5,  $\tilde{A} \tilde{S} a \tilde{A} \tilde{a} \tilde{E} \tilde{U} [ \setminus$

11-2 6^{\circ} 30' =

U|A C A

$$\mathbb{O}[\ast[\cdot, \cdot]]$$
$$(\lambda_1, \lambda_2, \lambda_3) = (\lambda_1, \lambda_2, \lambda_3)$$

\_\_\_\_\_

 $\hat{a} \hat{a}^\dagger: \hat{a} \bullet \hat{a}$ 

Page 1 of 1

UY	CH
----	----

--	--



